



December 2025

newsletter

Hello Fellow DPAL Members,

This is Diana Mitchell, your president emerita to wish you a very happy and safe holiday season. Please do not forget to stop by the league and check out the many wonderful hand crafted gifts in Yuletide Treasures.

I would like to use this opportunity to thank all of you who have stepped up and started to volunteer some of your time. The league is now slightly over 500 members strong. I find those numbers pretty amazing. This league was founded in 1957 by a handful of women who originally met in a veterinarian's waiting room. I think "We have come a long way, Baby." sums it up. Our 70th anniversary is fast approaching. Consider volunteering to plan the festivities and to participate.

Did you know that the Business Manager is the only paid member in our charitable organization? That is why volunteers are so important. When a member volunteers at least 4 hours of time he/she may enter monthly shows in Gallery I. Volunteers are also invited to display one or two art creations during June. June is the volunteer show and coincides with the annual meeting known for great food and often door prizes.

There are many options for volunteering. Because the position of front desk staffer is so vital to day to day operations and so visible to those frequenting the building, many other positions are overlooked. You can volunteer to become part of the hospitality committee, help with exhibits, get water and soft drinks from Costco (or other) and stock the refrigerator. Members can help plan or supervise workshops, let the president emerita know you are interested in becoming a board member. As this is not an exhaustive list, you can always contact me and I will connect you with the appropriate person or committee chair.

Thank you again to all the volunteers and our wonderful teachers for making DPAL so special.

Diana Mitchell, President Emerita
diamitc4@aol.com

It's **YULETIDE SEASON**

The Shop is Open

**Dec 1st-23rd
Mon-Sat
9 am - 5 pm**

**Christmas Eve
9 am - 1 pm**

Remember there will be a second drop off on December 4th.

See Page 6 for more YULETIDE!!!



Award winning Painting by Diana Mitchell

Wheaton Prairie Path Bridge, pastel



a Snowy Bridge

Diana Mitchell

pastel

Board Meeting Notes - November

Treasurer's Report.

Jennifer Bayer reported we continue to do well. Total income was more than budget; however, this was offset by lower revenue for summer session A classes and general donations. Total expenses were more than budget but were offset by less than budget expenses in other areas. We continue to have 18 months of reserve.

Membership:

Amy Tran We currently have 547 members. Memberships for 2026 are now available.

Education Report:

Margaret Bucholz reported the classes are going well. We have 21 adult classes and 4 children's classes this session.

Business Manager:

Yvonne Thompson said Yuletide Treasure's will be filmed by WGN for their Around Town segment on November 17th . Yuletide Treasures has a two-page spread in Glen Ellyn's Stroll magazine.

.....

NEW TEACHER!

Sue Rusthoven will be teaching Digital Art with Procreate (beginning). She will be teaching Tuesday afternoon 1-3:30pm.

Digital Art with Procreate App — Beginner Skills

Discover the exciting world of digital art in this hands-on introductory class designed for anyone new to Procreate. Whether you're brand-new to digital drawing or combining it with other traditional mediums, this course will guide you step-by-step through the essential tools and features of the Procreate app.

Throughout the class, you'll get comfortable with Procreate's full range of brushes, color options, tools and more. We'll experiment with textures, effects, and creative techniques that help bring your artwork to life. With guided practice and plenty of time to explore, you'll build a solid foundation for creating amazing digital art.

This class is perfect for beginners and a great starting point for anyone ready to dive into Procreate. All you need is an Apple iPad, a working stylus, and the Procreate app—no additional supplies required! (Please see supply list for specific details)

Join us on this inspiring journey as we learn, create, and experiment with the endless possibilities of digital art.

"Donated Art Supplies" Huge Sale

Mark your calendars

December 1, 2, 3,

(Monday thru Wednesday)

There will be a sale of new frames, stretched canvases and panels, oil paints, brushes, drawing art pads, tubes of watercolors and many other types of art supplies.... some oil and soft pastel are also available along with field and table easels.

Come, bring your own bag, and stock up on wonderful art materials at "garage sale" prices!

Sale hours are from 9:30am to 4:30pm

December 1-2-3

DPAL Board 2025

President: Mary Lynn Sullivan

Secretary: Maeva Cook

Treasurer: OPEN

VP Activities: Adele Dunn

VP Building & Grounds: Mark Galli

VP Education: Margaret Bucholz

VP Exhibits: Gallery I: Danielle Crilly
Gallery II: TBD

VP Finance: Carol Kincaid

VP Membership: Mary Ann Staroscik

VP Office Management: Barbara Finn

VP Publicity & Promotions: Patricia Kosar

VP Safety & Security: Darlene Edwards

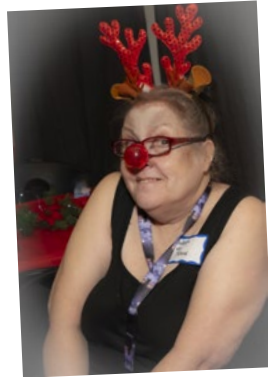
Presidents Emeritae: Diana Mitchell and
Carol Kincaid

Yuletide Treasures: Yvonne Thompson and
Wilda Kemp

Newsletter: Lori Tucker

dpalmembership1t@gmail.com

Yuletide Party



THANK YOU - YULETIDE PARTY VOLUNTEERS

Thank you to all who helped with the success of the Yuletide Party. I am grateful for the efforts of so many people in many ways:

- Room Set Up: Diane Kehoe, Barb Plichta, Kevin Gould, Holly Tyson, Maeva Cook
- Food /Beverages: Barb Finn, Diana Mitchell, Mary Lynn Sullivan, Maeva Cook, Danielle Crilly, Darlene Edwards, Pat Kosar, Yvonne Thompson, Margaret Bucholz, Carol Kincaid
- Greeter: Maeva Cook, Diane Kehoe
- Table Decorations: Yvonne Thompson
- Photography: Jim Waters, Maeva Cook, Diana Mitchell
- Entertainment: Yvonne Thompson, Marge Hall
Room Clean Up: Diane Kehoe, Marge Hall, Darlene Edwards, Kevin Gould, Jamie and Nick Rey, Margaret Bucholz, Dan Danielson, Wilda Kemp, Maeva Cook, Mark Grogan
- Sales: Margaret Bucholz

I love how people jump in to help and lend a hand! You made this event a success and I am so grateful.

Thank you,
Adele Dunn
VP Activities – dpalactivities@gmail.com

Newsletter/E-Blast Submittals

To submit email blast information and newsletter articles, send your information to: dpalmembershipt@gmail.com by the the 15th of the month. cceptable formats include Word documents or PDF files for text and 300dpi .JPG form images. Please proof and verify your copy before submitting. Send photos, flyers and other images as attachments to email.

Notes and More from Yvonne!

Yuletide Treasures Second drop off.

December 4th 11am--4pm

As with the first drop-off, you pack all your artwork in boxes with your inventory sheet and leave them, but this time on and under the 2 brown tables by the teacher's wall.

PLEASE NOTE.....Many of you are forgetting to add the inventory numbers from your inventory sheets to your labels. THIS IS AN IMPORTANT STEP

enter inventory number here

V



GRAB A FLYER or 10!

Everyone, please take some Yuletide Treasures flyers to share with your friends, family and groups you belong to. You can get them from the front desk or download them from our website. <https://www.dupageartleague.org/wp-content/uploads/2025/11/flyer-one-page.pdf>.

Yvonne Thompson - dpalbusinessmanager@gmail.com

Signing up for Classes...welcome to MAYHEM!

I know many of you are frustrated. I would love to have a trouble-free sign-up, but it seems like the gremlins get us every time. Let me first say, there is nothing wrong with the website. Let me explain.

Yes, last time we did make a mistake with one of the data entries on classes.....only allowing Family membership, but if that happens again (and I hope it doesn't, but we are human!) email me straight away. It was a quick 20-second fix. Don't complain to the teachers; they can't do anything but call me.

On sign up I am logged into the computer and I am watching sales as they come in. I am also watching my email feed (I have several windows open). I will often call a student if I see their credit card "failed". I don't often answer the phone because that is taking me away from my screen watching, but if you shoot me an email with "HELP" in the title, it will alert me immediately. Add your telephone number to the message, stating what problem you

are having, and I will see if I can attend to it immediately, or I will call you. Just remember, there may be at least 16 other people trying to get into the same class at the same time with a problem, so I beg you to be patient.

Sometimes the problem is signing in to your account. Please remember you have to use the same info as DPAL has on your account to sign in BEFORE you try to buy a class. If not, the computer will say you are not a member. It is always better to check your account the day before we go live. Many of you have been doing that and find you have forgotten your password. Oh, and Passwords. The computer does NOT send you a new password. It will just allow YOU to change it. If you have lost/forgotten your password, email me and I will reset it for you. But please don't expect me to do this in the middle of the sign-up.

While everyone is trying to get into their class, please remember it is just me working it! Only one admin can be online at a time for security reasons. It is NOT a computer problem; it is a safety measure.

So after lengthy talks with the Board. I want to try something else. We will switch the sign-up day to a Sunday. Sign-up has to be when the front desk is closed. Hopefully, this will give more time between each class sign-up and so make it less frantic.

This is normally only a problem for those of you trying to get into any of Ellen's or Dan's classes. Truth be known, there are always more prospective students than there are open spots in your favorite class, so there will always be some of you who don't get the class you want. Sorry, but our popular teachers never have enough spots for everyone.

YOU CAN SIGN UP FOR YOUR 2026 membership, starting December 1, online, in store or over the phone.



**YOU CAN SIGN UP FOR YOUR
2026 MEMBERSHIP Starting
December 1st, online, in
store or over the phone**

Dupage Art League - Upcoming

December 1-24 Yuletide Treasures - **Open**

Membership Renewals - Starts **December 1**

Activity Guide - Coming in **December**. Watch your email

Class Signup (WS26) **December 14**

Sneak Peak at first 2026 Gallery | Exhibit Theme:

January 2026—SANCTUARY

Entry: **Jan 7-8 Pick-up: Jan 28-29**

Description: Where do you experience peace?

Activities and Exhibits and More

Making "Paper Christmas Ornaments"

with Kay Wahlgren



Sunday, December 7, from 2 to 4 p.m.

[Click here to register](#)

Merry Christmas and Happy New Year!



Holiday Magic

Pastel painting by Danielle Crilly

DPAL Board Volunteer Position

Have a desire to support the arts and art education? All while being part of an active Board of Directors? If interested, please contact Jennifer Bayer at dpaltreasurer@gmail.com.

The DuPage Art League is seeking a Treasurer. The ideal candidate will have accounting and finance experience and a working, basic knowledge of QuickBooks and Excel. An understanding of nonprofit accounting is helpful, but not necessary. This person must hold honesty and integrity in high esteem and be committed to accuracy, transparency and timeliness.

Responsibilities include recommending financial policies, supervising the bookkeeper, monitoring credit card transactions, processing credit card refunds, overseeing the insurance policies, presenting and preparing monthly financial reports, reconciling bank accounts, executing ACH (direct deposit payments), preparing positive pay bank uploads, downloading sales information, and working with third-party accounting firm to prepare Form 990 (this arrangement will be completed after April 15). Qualifications include strong communication and interpersonal skills, working knowledge of Microsoft applications such as Excel, Word and PowerPoint, attention to detail and accuracy, and business acumen and ability to identify and communicate operating risk.

The time commitment is approximately 4-6 hours per week. The current Treasurer's term ended on April 30, 2025.

DPAL Always Needs New People to Volunteer!

New exhibits chair for **Gallery II**. NEEDED

Two or three volunteers are needed to help set up and clean up **League receptions and get togethers**.

The **front desk** can use more trained staff to fill in as needed

Our Building and grounds person needs a back up for **snow removal**.

We need an experienced CPA to replace our **treasurer**.

Our VP of Education would appreciate a **scheduling assistant**.

Diana Mitchell will help any new volunteer to get in touch with the appropriate officer or member.

Contact her at diamitc4@aol.com

Please volunteer

"I always wondered why somebody didn't do something about that. Then I realized I was somebody." –Lily Tomlin

Yuletide



Treasures

The Dupage Art League is bursting with hundreds of **ONE-of-A-KIND** creations.

Shop for unique extraordinary affordable gifts, by local artists.

Paintings, Photography, Ornaments, Holiday and Home Decor, Jewelry, Woodwork, Pottery, Wearable Textiles, Greeting Cards, Candles, and so much more!

Nov. 3rd - Nov. 29th

Mon.-Fri. 9:00 am - 5:00 pm

Sat. 9:00 am - 2:00 pm

Dec. 1st - Dec. 23rd

Mon.-Sat. 9:00 am - 5:00 pm

**Christmas Eve 9 am - 1 pm
for all those last-minute gifts!**



FREE "Thank you" gift

when you make a

Yuletide Treasures purchase
totaling \$75 or more

*(this offer does not apply to purchasing
gift certificates, classes or memberships)*

Free parking on Front Street or in
the parking garage across the street.

Yes, Yuletide is here! As I write this, the team and I are receiving all your lovely work! If you missed this first drop off, remember there will be a second one on December 4th.

I am noticing some of you are forgetting to enter your inventory numbers on the sticky artist labels. Please remember this for the second drop off.

I have had some wonderful help so far, but do remember EVERYONE needs to Volunteer. If you haven't signed up to help out in some way, you can pay a \$25 fee, which will help with things like the purchase of gift bags, the reams of tissue paper we go through for the sale, or help with the cost of decorations and refreshments for the party on the 9th of November. If you haven't volunteered yet, expect a call from me!



If you bring in more than the limits listed in the criteria package, said items will be removed from sale. I will call you if you are selling most of your work to replenish before the 4th. Remember all the forms are on the website. If you need more sticky artist code labels, please email me, giftshopandyuletide@gmail.com.

The gallery walls will be painted during the Christmas and New Year closing, so everything from the gift shop will be returned to you with your leftover Yuletide stock this year. New or replacement stock must have the new artist code label attached, so email me well in advance if you need one.

Also don't forget to sign up for the Yuletide launch party on Sunday, November 9th, from 2:00 pm to 4:00 pm. Lots of prizes, including jewelry, electric kitchenware, and a "Sign up for a class early" certificate! So mark your calendars and bring a friend!

Just one more thing, the 2026 memberships will be released December 1

Happy Holidays everyone!

Yvonne

WGN at DPAL!

Thanks to a lot of persistence and follow-up, Wilda Kemp, my right-hand woman, got Yuletide Treasures a spot on "Around Town" with WGN's Ana Belaval. I even shocked many members by actually getting up at 4 am to do the interview!

It was very interesting to see and be part of what goes on behind the scenes and how, "just like us" the team were. Not only did they do us proud for Yuletide, but when I told Ana about the classes, she was all for filming them too, to the students' surprise!



Wilda, Ana and Yvonne



Over 23 pounds of camera

Featured below are Ana, Mary (behind Ana, camera), Yvonne, Natalie (segment producer) and Eric, who drives the big WGN truck and makes sure all the 'feeds" get back to the studio.

We owe you a huge amount of thanks, Wilda, you are a star!



Safety Seconds

A few seconds can make a big difference!

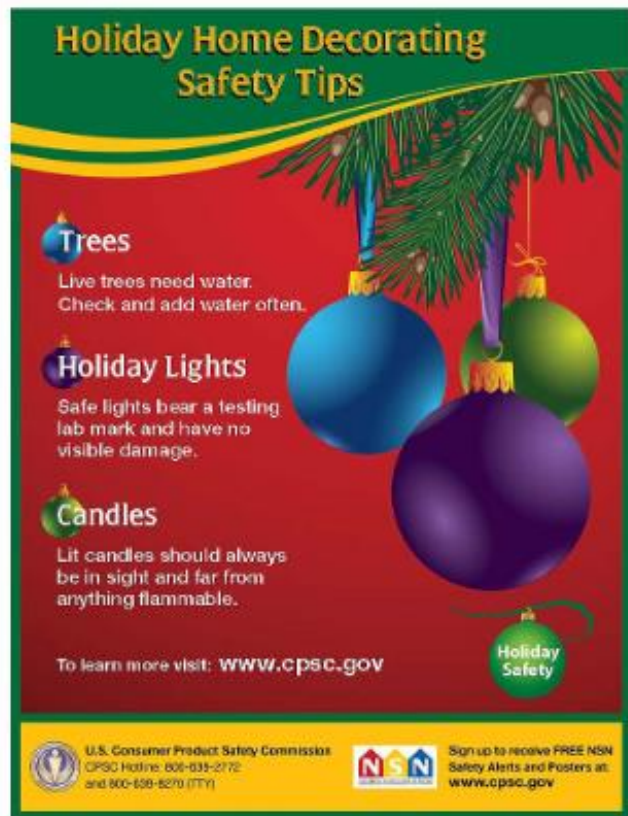
Darlene Edwards, VP Safety and Security

Decorating Safely for the Holidays

Decorating is one of the best ways to get in a holiday mood, but emergency departments see thousands of injuries involving holiday decorating every season.

When decorating follow these tips from the [U.S. Consumer Product Safety Commission](http://www.cpsc.gov):

- Keep potentially poisonous plants and objects – mistletoe, holly berries, Jerusalem cherry and amaryllis – away from children and pets



Avoid placing breakable ornaments or ones with small, detachable parts on lower tree branches where small children can reach them